

SPRING 2021

# WESTHORSLEY.INFO

News and information from West Horsley Parish Council

## THEATRE IN THE WOODS SUMMER SEASON COMMENCES

*"...we were using the quietest  
Harleys on the planet"*

CHARLEY BOORMAN

### IN THIS ISSUE



Find out more about the  
West Horsley Youth Council



Photography Competition  
for West Horsley youth



Interview with Wasfi Kani  
CEO of Grange Park Opera



West Horsley in Bloom 2021  
entry form enclosed





# HELLO FROM THE WHPC CHAIRMAN

Welcome to this second edition of our Newsletter. We were so heartened by the positive feedback from last autumn's publication.

I hope you find this one equally interesting and informative. Although the lockdown has again confined us all, the Parish Council has been kept busy. In November, we welcomed new Councillor, Guy Murray. We also welcomed Joanna Cadman as our Locum Clerk and RFO in January and another new Councillor, Angus Graham in March.

We are now at full strength which is just as well with the agenda before us! More about that later. Helping too, are volunteers Martin O'Hara, who is working with us on the Community Liaison Group for the Wisley Development, and Tina Grice who is assisting our Communications Team; we are hugely appreciative of the time and expertise they are giving.

In addition, we have launched the Climate Change subcommittee as part of the Planning Task Group. I hope you like some of the actions and Newsletter articles relating to Climate Change and urge you to do your bit – from recycling to plogging!

And, of course, there was the launch of the West Horsley Youth Council. It was an enormously proud moment when we welcomed the Youth Councillors to the Parish Council meeting and signed off their constitution. I'm so delighted that the voice of young people living in the village can be heard and influential in taking things forward.



Cllr Elaine Best  
chairman@westhorsley.info

I hope that by the time you read this the Covid-19 Vaccination Programme will have reached its key milestones; the shops will have re-opened (oh for a haircut!) and our local pubs will once again be able to serve us. It has been such a torrid time for everyone, but our thanks go to all those in the NHS, Social Care, frontline services and, of course, the Volunteers all of whom have played such an amazing part to get through the pandemic. With the summer almost upon us, here's to better days ahead.

## CONTACT DETAILS & CREDITS

### Parish Clerk and Responsible Financial Officer:

Joanna Cadman, Locum, West Horsley Parish Council, 95 The Street, West Horsley, KT24 6DD 01483 901905, [clerk@westhorsley.info](mailto:clerk@westhorsley.info)

Editor: Vanessa Buosi, [cllrbusi@westhorsley.info](mailto:cllrbusi@westhorsley.info)

Design and artwork by: The Creative Workshop 01580 212551, [www.tcws.co.uk](http://www.tcws.co.uk)

Print by: Simply Print Partners, 07768 228079, [www.simplyprintpartners.com](http://www.simplyprintpartners.com)

Photographers: Rex Butcher & Grange Park Opera

*All dates correct at time of going to press.  
The views or opinions expressed may not necessarily reflect those held by WHPC.*

Front Cover: The rose garden at West Horsley Place taken by Steve Harvey

## HORSLEY LIBRARY

Library Direct is available to help people who have difficulty getting to the library. For more details please call Enquiries Direct on 01483 543599 or email [libraries@surreycc.gov.uk](mailto:libraries@surreycc.gov.uk). Rhys Beynon (Chair of Friends of Horsley Library).

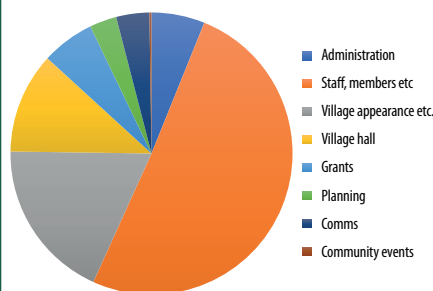
## WEST HORSLEY'S HENRY SMITH CHARITY

Remember that our historic parish charity can give small grants to residents in need. Please make a request, in confidence, via the Parish Clerk [clerk@westhorsley.info](mailto:clerk@westhorsley.info) or call 01483 901905.

## FINANCE AND EXPENDITURE 2020-2021

Over the last year we have managed the village finances as well as attained developers' contributions to enable us to maintain the village and to ensure we keep any precept increase to the bear minimum for our residents. The West Horsley Parish Council (WHPC) precept and grant from Guildford Borough Council for the financial year that has just ended was £83,172. Going forward 2021-2022 is has been set at £83,616 a marginal increase.

### PARISH COUNCIL EXPENDITURE 2020/2021



## VILLAGE REPORT 2020-2021

### Statement & Strategic Vision: The year ahead...

In October, the Council set out a strategic plan for the next three years: place-making, community, innovation, and well-being. It takes account of the housing development that the Local Plan sought to locate here and the inevitable strain it will place on the infrastructure. We will continue pushing hard for sufficient Section 106 money drawn from such developments to improve the existing infrastructure without ruining the character and ruralness of the village. This will be a challenge.

#### Our Goals:

1. Achieving the higher status of a Council with "general competence" to enable us to do more for the village.
2. Review status of the Local Plan\* and updating the Neighbourhood Plan\* and engage in consultations accordingly (\*see page 8).
3. Improving our engagement with residents and to keep you informed in a very timely way.
4. Address the increasing concerns that Climate Change is presenting.
5. Continuing to improve the appearance of the village in keeping with its character.
6. Supporting and enhancing the Youth Council.

The reason we are working on challenging to revise the Local Plan is due to the unusual heavy burden West Horsley is being put under by so many housing projects in and around the village, since losing our Green belt protection.

Many of you will have noticed the arrival of the Long Reach SANG (Suitable Alternative Natural Greenspace) which was required to offset the impact of the development planned for this side of the Borough on the Thames Basin Heath SPA (Special Protection Area). The Parish Council have challenged the quality of the finish and the extensive flooding issues with GBC and the Land Trust, who are due to take over the site in April this year.

We will continue working hard on your behalf. Please do email or use our post box at the Village Hall and if you are unhappy about something in the village or would like to see any improvements or have some fabulous ideas on how we can improve our community, facilities or events.

[clerk@westhorsley.info](mailto:clerk@westhorsley.info)

# WEST HORSLEY PARISH COUNCIL GIGABIT CAMPAIGN

Launched by Cllr Vanessa Buosi and liaising closely with East Horsley Parish Council and several amazing residents, Cllr Guy Murray spearheaded the West Horsley campaign to bring Superfast Broadband into the village.

Guy was able to work directly with Openreach and secure a last-minute process to enable us to meet the Openreach deadlines. With a huge team effort from parish councillors and West Horsley Youth council members, we were able to arrange a leaflet drop within 24 hours of launching. Guy created a bespoke web page to collate Gigabit pledges and to bring clarity and detail to this campaign as well as allowing WHPC to update everyone of the progress of the scheme. Within weeks, Openreach confirmed that West Horsley would be included in the roll-out this year!

Openreach were impressed by West Horsley residents signing up so quickly and therefore

ensuring our inclusion of the Gigabit scheme.

A big thank you to East Horsley who have supported West Horsley in achieving success with this campaign and whom we will continue to work with throughout the rollout. We look forward to a smooth installation at the end of 2021 early 2022!

Should you have any queries or require further details please visit our website or sign up to our mailing list for further updates on this campaign.  
[www.westhorsley.info](http://www.westhorsley.info)



## UPDATE FROM YOUR WARD COUNCILLORS

We are working as closely as possible with Guildford Borough Council (GBC), Surrey County Council (SCC) and the Parish Councils to support residents and local businesses with issues raised due to the Covid-19 restrictions. GBC is distributing a comprehensive range of government grants to businesses affected by Covid-19 – see the GBC website for details [www.guildford.gov.uk/](http://www.guildford.gov.uk/). On planning we continue to liaise with officers in seeking to mitigate the consequences of the Local Plan inflicted on our villages and ensure that the West Horsley Neighbourhood Plan is adhered to. Please get in touch if you feel we can help you in any way:

- **Tim Anderson:**  
[tim.anderson@guildford.gov.uk](mailto:tim.anderson@guildford.gov.uk)
- **Chris Barrass:**  
[christopher.barrass@guildford.gov.uk](mailto:christopher.barrass@guildford.gov.uk)
- **Catherine Young:**  
[catherine.young@guildford.gov.uk](mailto:catherine.young@guildford.gov.uk)

# HORSLEY BIG DAY OUT

After a year spent socially isolating, bereft of live performances and eating out, the Horsley's two Parish Councils have got together to stage the 'Horsley Big Day Out', a fabulous food and music festival for all the family on Sunday 4 July. De Vere Hotels has generously agreed to host the event at Horsley Towers.

Entrance is free but car parking is £10 with proceeds going to the Cherry Trees Charity. We will abide by government restrictions in place at the time but hope most of these will be a dim and distant memory by July. Gates open at 2pm and you can expect some great music from The Friday Five, Horsley Rocks, Unfinished Business, the Surrey Pumas and The Cheap Shots with a headline performance from The Soulтанas. There will be plenty to eat and drink, a chance to explore our Artisan Market and admire our Classic Vehicle Show. There are also some great activities planned for children. So mark your diaries for Sunday 4 July.  
[www.easthorsley.info/horsley-big-day-out/](http://www.easthorsley.info/horsley-big-day-out/)



## WEST HORSLEY COMMUNITY SPEED WATCH TEAM

West Horsley Parish Council had been asked to do something about the problem of excessive speeding in the local area. So a year or so ago a team of residents, willing to devote some of their spare time, set up a Community Speed Watch (CSW) action group. Before a new volunteer can take part in a session, he/she must be police trained.

The training sessions include using CSW equipment under the supervision of staff from



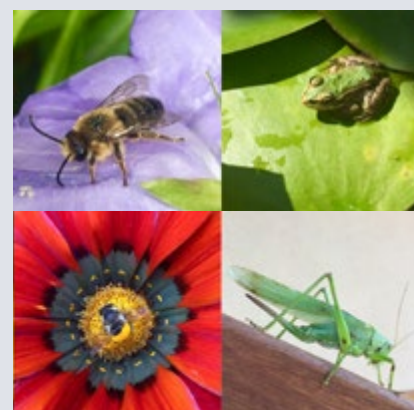
the Police Road Traffic Safety team. We have six positions in West Horsley we can carry out CSW sessions. We must schedule each session about a week in advance so that the Police are aware when a session will take place and occasionally, they like to be present to reinforce our message in trying to protect our community.

The more volunteers the better and we trust that each volunteer is prepared, after training, to attend four one-hour CSW sessions per month. Why not consider joining the team to protect our families and children from the speeding builders' trucks and passing through traffic?

West Horsley Community Speed Watch can be contacted through the Parish Clerk  
[clerk@westhorsley.info](mailto:clerk@westhorsley.info).

## PHOTOGRAPHY COMPETITION! Calling all budding photographers...

Working with the WHPC Youth Council, we are running a photography competition for 13 -18 year olds this summer. Look out for posters and on our website for details of the categories and entry requirements. Prizes will be awarded in September. Thanks to Abbey Jarman for these photo closeups.





## AN INTERVIEW WITH...

# CHARLEY BOORMAN INTERNATIONAL ADVENTURER AND ELECTRIC VEHICLE FAN!

## How did the electric vehicle trip all come about?

After completing "Long Way Round" (London-New York) and "London Way Down" (John O'Groats to Cape Town) on petrol motorbikes we have had around a 12-year gap since our last trip. Ewan (McGregor) moved from the UK to LA, and we were both busy doing various movies and documentaries. Unfortunately, I had a huge motorbike accident abroad which left me with some nasty injuries and as a way to get me back on the bikes and push through my recovery, Ewan began plotting our next trip, the Long Way Up from the southernmost tip of South America (Ushuaia in Argentina) through South & Central USA finishing in LA but on all electric motorbikes! This had never been done before and it was a going to be a serious challenge, I was hooked! Technology had moved on considerably over the last 12 years but not many motorbike manufacturers had started to produce electric motorbikes. Interestingly Harley Davidson were the furthest ahead and we ended up using bikes notoriously noted for their noise but now we were using the quietest Harleys on the planet! LiveWire Motorcycle: [www.harley-davidson.com/gb/en/motorcycles/livewire.html?source\\_cd=Vanity\\_livewire](http://www.harley-davidson.com/gb/en/motorcycles/livewire.html?source_cd=Vanity_livewire)

*Charley Boorman with his electric bicycle outside the Village Hall*



## What did you find most challenging?

At the beginning of the adventure in Argentina we hit some of the most challenging issues! There were no fast-charging points and we had to rely on friendly locals to plug into their homes for nearly 11 hours to fill up. The cold really affected the bikes charging capability. One night when it hit -10C, we had to bring our bikes into the hotel lobby (which was still cold) and wrap them up in blankets to warm the bikes so they would take the charge! We had to manage our distances between each stop carefully and in general most locals found it quite hilarious that we were plugging in Harley Davidson motorbikes! It really gave us an instant connection and talking point for us when meeting these generous households along our journey. Our Electric adventure ended up with us covering over 13,000 miles and 13 countries!

## Are you a convert to Electric Vehicles?

I am not an eco-warrior, I understand the need currently to use petrol or hybrid cars however to travel 280 miles on a single charge costing £6 or an electric motorbike with a full charge costing £1.50... it's a no brainer for the health of the planet and our pockets! There are great British companies such as myengeri, <https://myengeri.com> that can provide home charging units for 20kw per min! (Fast charging points are 50kw pm).

## Why Surrey?

After a life in London, we have decided to move the Surrey Hills this Spring! After many visits to great friends, who live in West Horsley (gateway to the Surrey Hills!), we felt this move would be perfect for us too. My hope is to install home specialist charging points and ground source energy to reduce my need for fossil fuels. My rehabilitation using the electric bicycles in the area has been amazing and I can't wait to move down to the Surrey Hills with their great road and off-road networks and to enjoy the beautiful countryside every day!

Further details on Charley's trip are available at

[www.longwayup.com](http://www.longwayup.com)

Cllr Vanessa Buosi

## CLIMATE CHANGE JOINS THE PLANNING & ENVIRONMENT TASK GROUP AGENDA!

With both SCC and GBC declaring climate emergencies, we need to look at what we can do at a local level to help. Our intention is to work with East Horsley PC as part of a joint initiative. We are looking to set up a volunteer working group (subcommittee) with the initial purpose of identifying how we can inform and advise our residents on ways to reduce their carbon emissions. See these examples of how we can start to make a difference!

1. Go electric - support car and cycling charging points, see WHPC ideas for Your Fund Surrey on the back page of this Newsletter.
2. Reduce - your energy and water consumption at home, switch off your appliances when not in use.
3. Awareness - watch the David Attenborough Documentary on Climate Change The Facts (2019) [www.bbc.co.uk/iplayer/episode/m00049b1/climate-change-the-facts](http://www.bbc.co.uk/iplayer/episode/m00049b1/climate-change-the-facts).
4. Measure - your carbon footprint at: <https://footprint.world.org/#/>
5. Recycle - your plastics wherever possible and try to avoid buying bottled water.
6. Switch - use a green energy supplier [www.moneysavingexpert.com/utilities/cheap-green-energy](http://www.moneysavingexpert.com/utilities/cheap-green-energy).

West Horsley Parish Council is also part of a wider Parish Council network (East Horsley, Effingham, Ockham, Ripley, Send and West & East Clandon). This group was created to share ideas, best practice and to work together on joint initiatives.

If you would like to get involved in our subcommittee please email Cllr Catherine Young, [cllyoung@westhorsley.info](mailto:cllyoung@westhorsley.info)



*Ewan & Charley on electric Harleys at a Costa Rican solar farm*



## THE WHPC CHAIRMAN INTERVIEWS...

# WASFI KANI CBE CEO & FOUNDER OF GRANGE PARK OPERA

I've long had a love of music, so it was a pleasure to catch up with Wasfi as she prepares for the 2021 Opera Season in the Theatre in Woods at West Horsley Place commencing June 10th, 2021.

I began by asking how Grange Park Opera had managed during the pandemic which had devastated the entertainment industry and left so many musicians, artists, technicians, and stagehands without work. With Wasfi's proven entrepreneurial skills & talents GPO had managed to run a series of online pieces for which all participants had been paid accounting for £190,000!

Regarding the shows, I asked...how did you scoop Bryn Terfel to play the lead in Falstaff this season? Wasfi's response..."I had to be very charming, work quite hard and build on my knowing him from 2007 and with his association with Simon Keenlyside, who returns to play Iago in Otello next year, it all came into place". I enquired, how far in advance do you have to book the artists and how do you choose the season's programme? I was surprised to learn that the reply was 4-5 years to get the best internationally renowned artists. Wasfi explained that she aims to offer a good mix to appeal to all tastes – a

popular piece like Oklahoma in 2018, something familiar (La Bohème 2021) and least performed (Rimsky-Korsakov's, Ivan the Terrible, re-named by Wasfi, this season). This year she has the rights for the first ever performance of The Life & Death of Alexander Litvinenko (the Russian who defected to the UK and was poisoned in 2006). Why, I asked? Many of us will remember those horrific pictures on TV. Wasfi explained that it is a compelling, fascinating, musically rich piece. She had come to know Mrs Litvinenko, describing her as a beautiful, quiet person and of Alexander, a courageous man, who wanted his suffering filmed to show the world; "I visit his grave in London often", Wasfi adds.

I ventured that opera is not to everyone's taste so how do you encourage the sceptic, the uninterested to come along? Immediately, Wasfi said "I hate the phrase opera buff, you don't need to know anything about opera – the subtitles give you the story". I was taken aback. She went on, "walk in, sit in a seat, everyone feels something different, let the music engulf

you, the narrative is before your eyes, let what you feel tell you something about yourself, reflect and enjoy". "It's the audience sitting together, loving the music and the spectacle that matters". Wow, take note all!

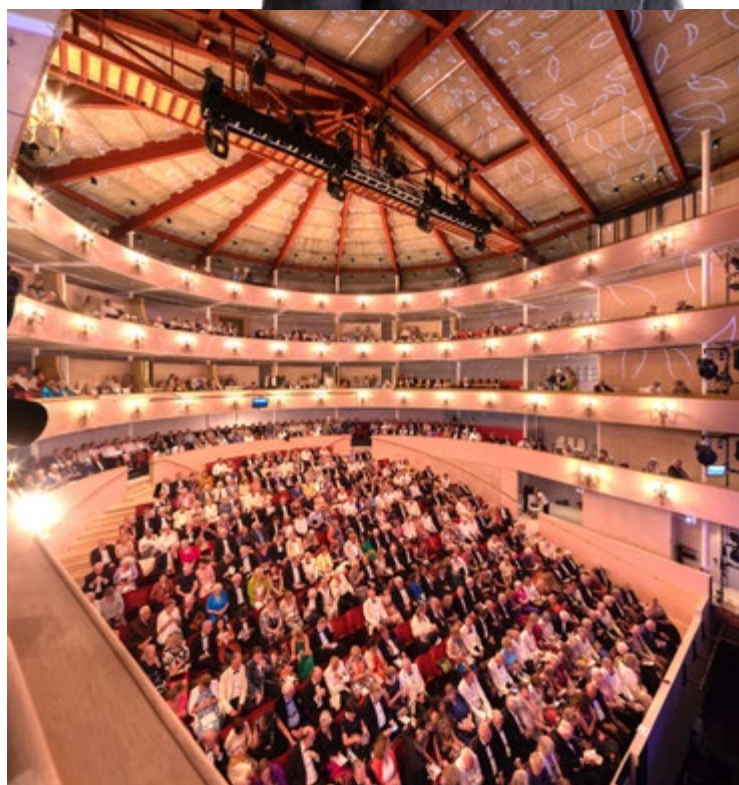
Just before we finished, I couldn't help but ask what opportunities there were for those who couldn't afford the normal ticket prices. Wasfi said there are a limited number of tickets at a reduced price of £35 for those under 35 years and a system of musical chairs for music students which are free – write to [info@grangeparkopera.co.uk](mailto:info@grangeparkopera.co.uk) explaining why you would like one or visit <https://grangeparkopera.co.uk/musical-chairs-form/>

As a parting shot, I asked how she had coped with the pandemic and what her greatest life achievement had been thus far. Expect the unexpected from this quite amazing lady! Her answers...

"I learnt basket weaving (you have to soak the willow, so it takes quite a time) and how to repair a flat roof – I've now done several"! As for life achievement – "not dying from high blood pressure – I'd gone for a test was immediately taken to hospital and lived". Thank heavens for that I said, we need you! The Season opens with Falstaff on 10th June and runs until 18th July. Full details are available at [www.grangeparkopera.co.uk](http://www.grangeparkopera.co.uk)



*"I hate the phrase opera buff, you don't need to know anything about opera"*



*Clockwise: Theatre in the Woods auditorium, Lavatorium & signpost (so no-one gets lost in the woods!)*



# TASK GROUPS COVERING YOUR VILLAGE

Separate Task Group meetings have been held virtually and actions are still being accomplished throughout COVID-19! We have redefined our groups (see below) and with regular meetings in addition to official Parish Council meetings, the teams remain on schedule. Here are the latest updates including the team Leader of the group whom you can contact if you have a query.



## COMMUNICATIONS TASK GROUP

We've had a remarkably busy year so far, with communicating to everyone on the Gigabit broadband scheme to the installation of the first of many replacement noticeboards. We are grateful to all those who signed up to receive village updates from us and to those that still need to sign up please do so quickly to ensure you don't miss out! We promise not to over share! Our website is set to change over the next few months with new features, some already in play. Our new style Newsletter (also available on the website) provides interesting reading. Please let us know if there is any particular subject you would like us to consider featuring in our Autumn issue.

*Vanessa Buosi - [cllrbuosi@westhorsley.info](mailto:cllrbuosi@westhorsley.info)*

## ROAD SAFETY & MAINTENANCE TASK GROUP

We're pleased to report that various signs around West Horsley have been repaired/ replaced by Surrey County Council Highways (SCCH), whom we continue to work closely with. They have agreed to repair/replace various other signs and some railings by The Raleigh School. We frequently hear about residents' discontent regarding the issue of speeding in West Horsley, we regularly liaise with the West Horsley Community Speed Watch team (WHCSW). It's great news that SCCH have loaned us a mobile Vehicle Activated Sign (VAS) to remind drivers not to speed. WHCSW have agreed to look after the placement and changing of batteries for these devices. As ever, should you spot potholes or pavement issues, please report them at the following address: [www.surreycc.gov.uk/do-it-online/report-it-online](http://www.surreycc.gov.uk/do-it-online/report-it-online) or if you have any other queries or concerns please contact the Clerk at [clerk@westhorsley.info](mailto:clerk@westhorsley.info).

*Sally Newman - [cllnewman@westhorsley.info](mailto:cllnewman@westhorsley.info)*

## PLANNING & ENVIRONMENT & CLIMATE CHANGE

We have continued to meet 'virtually' once a month (sometimes twice!) to review the applications received and decide on our recommended course of action to put to the full Parish Council for approval. As already mentioned, we are delighted we have been able to add Climate Change to this Task Group as a sub-committee headed up by Catherine Young. For a summary on village planning see Planning Matters in this Newsletter and for all detailed planning matters please visit our website and review under 'Planning'.

*Frances King - [cllrking@westhorsley.info](mailto:cllrking@westhorsley.info)*

## ASSET & APPEARANCE TASK GROUP

The inaugural year for the Assets and Appearance Group is nearly over, and so far despite the restrictions of lockdown we have successfully managed and improved the majority of the Assets owned by the Parish Council. There was a recent planting of trees on the Village Green to soften the view of this treasured site, and we have further plans to tidy up areas to the rear to provide an open space that residents, walkers and cyclists can enjoy. There are also plans in motion to repair and improve the tennis court. The new planters at the Village Hall, which we allocated developers contributions to, look magnificent, and we have plans to plant more native flowers throughout the village. We are also looking into the possibility of creating several new road signs to define the boundaries of the village, "Gateway to the Surrey Hills" and also to install new benches where they are most needed. We would welcome ideas from residents as to any other features that would enhance the aspect of our beautiful village. Please contact us with any ideas or suggestions.

*Tony Rogers - [cllrrogers@westhorsley.info](mailto:cllrrogers@westhorsley.info)*

## FINANCE TASK GROUP

Aside from the normal work of going through budgets and reporting on receipts and payments throughout the year, the major event for the Finance Task Group in 2020/2021 has been the decision to take the accounts from Excel based spreadsheets to an automated accounting programme system, starting from 1 April 2021. This will simplify and quickly produce the year-end accounts as they will be automatically generated. Also, the Statutory Forms will be completed directly by the system reducing any possibility of errors by transferring figures manually. The tracking of expenditure against budget for each budget heading and Task Group will constantly be up to date and available immediately enabling greater control and management of spend. Any variances can also be more easily identified. After considerable work by the Clerk and Council members the precept request to Guildford Borough Council for the 2021/2022 financial year was fixed with a less than 2% increase on 2020/2021.

*Frances King - [cllrking@westhorsley.info](mailto:cllrking@westhorsley.info)*

## COMMUNITY TASK GROUP

The Community and Wellbeing Task Group has been very badly hit by the pandemic. Our main raison d'être is to communicate with village residents, by mounting various activities for the community. Since March 2020, that has been totally impossible. Even as recently as February 2021, our much-needed Litter Pick had to be cancelled. Things are, however, beginning to look a little brighter. In normal times, we have an event for almost all ages. It could be that some of those will also become possibilities! We hope to be back on schedule this year for the sake of everyone's wellbeing. Please note: - the relevant dates for proposed events appear on our West Horsley Parish Council website.

*Mel Beynon - [cllrbeynon@westhorsley.info](mailto:cllrbeynon@westhorsley.info)*

*Multi-stemmed hornbeams being planted at the Village Green*



# WEST HORSLEY PARISH HAVE THEIR OWN YOUTH COUNCIL!

The Parish Council has always tried its best to listen to the requests, complaints or suggestions of improvements as offered by our village residents. However, we felt we were missing the voice of the youth of our village and we have recently sought to do something about this. We are proud to say that at the December Parish Council meeting, six young people were accepted as the founder members of West Horsley Youth Council (with the final member joining in February).

This Youth Council will echo the full Council in that they have an elected Chairman, Clerk and Finance Officer. We hope that not only will this offer a real voice to the youth of the community but that they will begin to understand the responsibilities of being a Parish Councillor and having the opportunity to make a difference in your own village and community.

Under our guidance, we hope that they will grow with confidence and have a relevant and influential place in our community. The Youth Council will initially become part of The Community Task Group, as they already have a programme of planned events which they hope to launch as soon as Covid-19 restrictions allow. West Horsley Place is keen for our Youth Council

to work with them to plan and add future events and schemes.

*Watch Joe Wicks congratulate our new Youth Council members at [www.westhorsley.info/Youth\\_Council\\_38458.aspx](http://www.westhorsley.info/Youth_Council_38458.aspx)!*

All in all, we see it as an important and positive way of ensuring that our young people feel that they have a real and significant place in our local community as well as providing a great experience they can take forward to the next stages in their education and careers.

If you are interested in joining the Youth Council and are aged between 13-18 years please email [Mel Beynon - cllrbeynon@westhorsley.info](mailto:MelBeynon@westhorsley.info) or [Vanessa Buosi - cllrbuosi@westhorsley.info](mailto:VanessaBuosi@westhorsley.info).



## WEST HORSLEY ARTS NOTICE BOARD

Our vision going forward is to have a continual renewed source of artworks displayed at the bus stop from all our talented residents and students of West Horsley. We are proud to have had so many lovely displays so far! If you have artwork that you would like exhibited at the bus stop, please send it to me by email.

[Mel Beynon - cllrbeynon@westhorsley.info](mailto:MelBeynon@westhorsley.info)



## HORSLEY COMMUNITY FUND – MEET THE TEAM!

In line with the tremendous community spirit and generosity shown in the Horsleys, The Horsleys Community Fund (HCF) has been able to help individuals in several ways. To find out how you could benefit from this fund, please contact Clare Mathias, [claritaclare@gmail.com](mailto:claritaclare@gmail.com) or call 01483 281755. We have funds available to support local groups who provide community services so please do get in touch! Sign up for our Newsletter at [www.cfsurrey.org.uk/horsleysconsent/](http://www.cfsurrey.org.uk/horsleysconsent/).



## WEST HORSLEY VILLAGE HALL UPDATE

It's been a strange old time recently and very "stop-start" for WHVH, opening and closing to meet Government restrictions. Assuming nothing changes in the Government's "Roadmap", we should re-open to regular hirers from Step Three but with all the Covid-19 safety protocols still in place. Sadly, we don't yet know when we are going to be able to host children's parties again, but it will not be before Step Four. We need to wait and see how things go and what sort of restrictions we might need to comply with in the future. However, while we have been closed, we have been using the opportunity to do a few things in and around WHVH.

Those who use the playground will have seen the fantastic new toddler multi-play unit which has replaced the ageing train. The two

large planters in front of WHVH have also been refurbished with oak sleepers and planks. We are hugely grateful to the two members of Horsley Garden Society who kindly volunteer to look after these planters and they have plans to get the planters looking really colourful in the months to come. Both these two projects were funded by local developer contributions.

We continue to work hard to keep WHVH, its users, staff and volunteers as safe as possible. We will do our best to make the hall available again to everyone as soon as we possibly can, please keep an eye on the website for updates. Fingers crossed for a little bit of normality soon!

[Julia Reardon Smith, WHVH Manager](mailto:JuliaReardonSmith@westhorsleyvillagehall.org)  
[www.westhorsleyvillagehall.org](http://www.westhorsleyvillagehall.org)



*New multi-play unit at Village Hall playground*

## METHODIST CHURCH WEST HORSLEY

During lockdown, some members are attending online services on Sundays and others holding their own private worship at home using material published by the Methodist Church. In due course, and Covid-19 permitting we will start Thursday coffee mornings to which all are invited. Since the last Newsletter, the church has become easier to identify as lettering saying METHODIST CHURCH has been added to the front elevation. Plans are currently being developed to make the church more accessible to wheelchair users via the front porch door. At the present time wheelchair access is provided directly into the church hall and via the side entrance to the foyer area.

[www.westhorsleymethodistchurch.org.uk](http://www.westhorsleymethodistchurch.org.uk)



## PLANNING MATTERS...



### WHAT IS A LOCAL PLAN?

Local plans are prepared by the Local Planning Authority (LPA) and The Local Plan will provide a long-term vision and strategy to meet the future needs of the borough, identifying changes that may happen, and the broad locations for development. The Local Plan will include planning policies, which will be used to determine whether planning applications are appropriate for the borough and are approved or refused, in our case by Guildford Borough Council.

### WHAT IS YOUR NEIGHBOURHOOD PLAN?

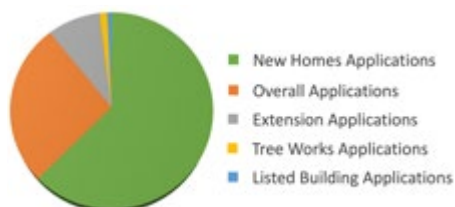
This is a document that sets out planning policies for the neighbourhood area – these planning policies are used to decide whether to approve planning applications. They are written by the local community, the people who know and love the area, rather than the Local Planning Authority. For full details of your adopted Neighbourhood Plan visit [www.westhorsley.info](http://www.westhorsley.info). WHPC rely heavily on this document to defend inappropriate development and retain our rural village. As always, the Parish Council does recognise the need for change, however we will always strive to protect green fields, our environment, our heritage assets, as well as preserve our local character and landscape setting of the village. To get involved with your Neighbourhood Plan please contact our Clerk [clerk@westhorsley.info](mailto:clerk@westhorsley.info). [www.westhorsley.info/Neighbourhood\\_Plan\\_25129.aspx](http://www.westhorsley.info/Neighbourhood_Plan_25129.aspx)

### FACT & FIGURES ON PLANNING APPLICATIONS IN WEST HORSLEY

Planning has continued at pace despite the pandemic. Now that West Horsley is no longer 'washed over' by the Green Belt, we have seen an increased number of windfall sites/back garden developments come forward, as well as the arrival of two of the three allocated sites, one approved and one currently being considered. Rumour has it that the third is on its way. Since January 2020 we have received 150 applications, compared to 115 in 2019 including: approximately 18 applications for new homes, which will result

in, if all approved, a net increase of 350 additional homes in the village, several applications for extensions (49) and works to trees (7).

[www.westhorsley.info/Planning\\_25128.aspx](http://www.westhorsley.info/Planning_25128.aspx)



### WEST HORSLEY VILLAGE SITES UPDATE

- Site A36 Land at and to the rear of Bell & Colvill (41 homes)** – Development is across two sites – 20 The Street, Brookworth Homes Ltd and the old Bell & Colvill workshops, Vanderbilt Homes Ltd. Work has commenced.
- Site A37 Land to the west of West Horsley, Manor Farm (139 homes)** – The previous application (from Thakeham Homes Ltd) was withdrawn and having gone through public consultation, a new application is currently being reviewed by the GBC planning officer.
- Site A39 Land to the north of West Horsley (around Waterloo Farm– 120 homes)** – We have been informed that there is an application due for part of this site at Oaklands Farm, Green Lane, which will deliver 35 of the 120 if approved.

- Champney Cottage, Cranmore Lane (5 homes)** – The appeal was upheld by the Inspector and these have been approved – work has commenced.
- Britains Farm (5 homes)** – These were approved – work has commenced.
- Silkmore, Silkmore Lane (4 homes)** – These were approved – work has commenced.
- Goodhart-Rendall site, Cranmore Lane (4 homes)** – Proposed demolition & rebuild of Community Hall, revised application received.
- 168 The Street (3 homes)** – Original application for two dwellings in the garden was withdrawn, a new application has been submitted for three new homes, awaiting decision.
- 164 The Street (5 homes)** – On land at the back with access from Little Cranmore Lane, awaiting decision.

### WISLEY UPDATE

The decision by Highways England for the proposed improvement to the A3/M25 junction, which is critical to the development of the Wisley Airfield site, has been delayed until May. In the meantime, developers Taylor Wimpey (TW) have been engaging with local Parishes and pressure groups likely to be affected by the proposed development, via the Community Liaison Group, and significantly the Masterplan for the layout and content of the site (including 2000 homes) has been re-negotiated and amended in response to comments and opinions from the CLG.

It can be viewed on TW's website, at [www.wisleyairfield.com](http://www.wisleyairfield.com) which also contains more background information relating to the site. WHPC are very concerned about the impact of the Wisley site and other proposed local residential developments on traffic flow, and are in the process of appointing a specialist traffic consultant, jointly with East Horsley Parish Council, to represent us in negotiations with TW.

It is imperative that we ensure that disruption of village life due to a significant increase in the volume of traffic is minimised during the construction period – estimated at about 10 years – and permanently thereafter.

[Tony Rogers - cllrogers@westhorsley.info](mailto:Tony.Rogers@westhorsley.info)

*Bell & Colvill - proposed demolition for 15 dwellings*





*Rev'd Phil Herrington Rector  
St Mary's West Horsley*

Reach out and connect to someone you love or care about with either a text, video call or just a quick phone call. Just remember we are all navigating this situation together.

# THE DRIFT GOLF ACADEMY

The new Shortgame area is now under construction as well to include a new 1st tee complex for the golf course and patio overlooking the course. The outfield has now started to dry out allowing the final infrastructure and shaping to take place ready for new seed which, weather permitting will establish quickly ready to open the facility this summer. [www.driftgolfclub.com](http://www.driftgolfclub.com)

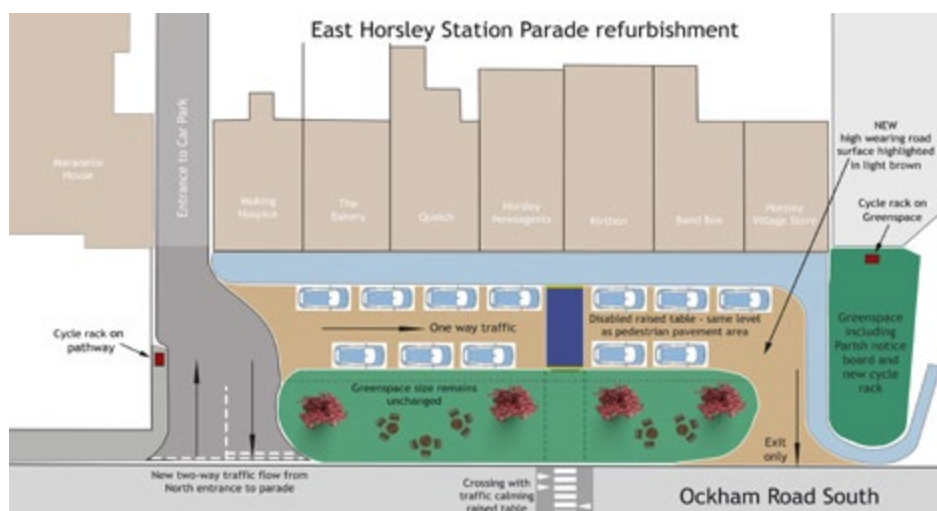


# FRIENDS OF HORSLEY STATION UPDATE

Vote for one of our most important local assets at Your Fund Surrey or to get involved with the project contact [clrbeynon@westhorsley.info](mailto:clrbeynon@westhorsley.info) or [cllrrogers@westhorsley.info](mailto:cllrrogers@westhorsley.info), West Horsley's representatives.

# EAST HORSLEY STATION PARADE

This will be funded by developers' contributions and timings to complete the scheme will be over the next 12 months. Should you have views or would like further information please email the EHPC Clerk, Nick Clemens at [parishcouncil@easthorsley.org](mailto:parishcouncil@easthorsley.org).



# WEST HORSLEY EVENTS CALENDAR

***New Youth Council events will be announced via our website & Social Media.***



# OUR VILLAGE TREES

Many of you may know that almost a year ago the Parish Council was the beneficiary of a generous bequest with the request for trees to be planted around the village to replace some of those that have disappeared from the Parish over the last few years. With part of this bequest, we are delighted to say that mature trees (specially trucked in!) have been planted on the Village Green and they look amazing. On hearing of the bequest, we were contacted by Horsley Countryside and Preservation Society who had over the past two years been discussing with SCC where trees could be planted on roadside verges in the Horsleys. WHPC agreed to fund all the planting in West Horsley from the bequest. It will be native species such as Rowan, which will provide food for wildlife.

We were also approached by St Mary's Church for funding to replace two dead mature Cherry Trees and planting to fill gaps in hedging. We are very pleased to confirm that the planting of these has recently been completed. The busy WHPC team managing the bequest had yet another project request for a replacing a hedging corridor at Grace & Flavour after they had to clear rough scrub in the wildlife area to facilitate repairs to the north wall. They decided that a mixed hedge of native species would provide the best wildlife corridor, food, nesting and refuge for birds and insects. We hope that the village planting will blossom over the spring and summer and everyone can enjoy the generosity of this kind bequest.



## WEST HORSLEY IN BLOOM

After the cancellation of last year's event due to Covid-19 we are back! We hope it will be a bumper celebration for us all, so PLEASE, have a go and enter. We try to offer a full range of levels of entry to try and cover all gardening skills and interests. There are categories for vegetable growers to flower gardeners! This is a competition for everyone and is more about a sharing of common interests than outdoing anyone else. The Presentation, in the presence of the Mayor of Guildford, is really a thinly disguised excuse for a village celebratory party but don't tell anybody!

Our prizes are sponsor driven and we hope that with their generosity, even during these tough times we will be able to offer our usual monetary prizes. The message is, "come and join in the fun". Let's have a really great celebration. We all deserve it. Our closing date, judging dates and presentation dates are also on the Entry form which is enclosed with this magazine.

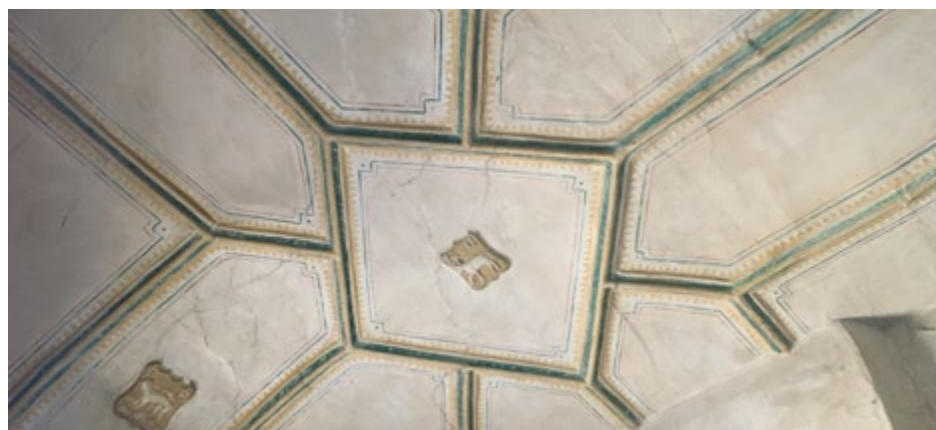
[https://www.westhorsley.info/West\\_Horsley\\_In\\_Bloom\\_25208.aspx](https://www.westhorsley.info/West_Horsley_In_Bloom_25208.aspx)  
Mel Beynon - [clrbeynon@westhorsley.info](mailto:clrbeynon@westhorsley.info)

## GRANT FOR WEST HORSLEY PLACE

West Horsley Place Trust has received a financial boost, from the Government's Culture Recovery Fund, of £13,648 towards urgent repairs to the decorative ceiling of the Geraldine Room.

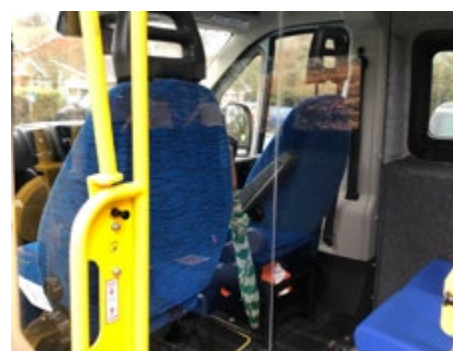
The ceiling dates from 1547 and is believed to be the oldest surviving decorative plaster ceiling in England. Ben Pearce, Director of West Horsley Place Trust, said: "We are delighted to receive this funding from the Culture Recovery Fund. It will help us to learn more about and save a unique part of England's heritage. The funding will help take a step closer to opening this part of the House so it can be seen and enjoyed by our community."

To conserve and repair the house, outbuildings, and estate, and to give them a new life and purpose, Bamber and Christina Gascoigne have generously transferred ownership of West Horsley Place to a charity, the West Horsley Place Trust (formerly the Mary Roxburghe Trust). The Trust is seeking to establish a welcoming space for the community to share and enjoy with arts, culture, community, history, and nature at its heart. [www.westhorsleyplace.org](http://www.westhorsleyplace.org)



## THE HORSLEY COMMUNITY BUS

The bus has been kept busy throughout the lockdowns. The Community Bus Society committee, agreed that we should offer the bus for trips to vaccination centres. We made the bus as covid safe as possible with air-tight plexiglass screen between the driver and passenger compartments, as well as touchless hand sanitisers at both entrances. Anyone requiring transport to a vaccine centre is invited to get in touch. We ask for a donation of £5 as contribution towards running costs of the bus. To book contact Kelvin on 01483 283314 or 07530 167283. Hopefully we will be able to resume the usual shopping excursions shortly.





## HORSLEY SCOUTS

1st Horsley scouts are a proud part of our local community. We offer adventure, excitement, fun and challenges whilst instilling values and developing skills for life in our young members. We have a dedicated team of leaders and supporters who make it possible for us to deliver a fantastic opportunity for young people locally, but we always need more.

Despite the pandemic cubs and scouts have continued with online meetings and activities including cooking brownies and pancakes, knot tying, constructing bird feeders and making Christmas wreaths for Dene Place, as well as playing games. Between lockdowns we have managed hikes and pioneering activities. However, we're looking forward to returning to face to face scouting.

Currently we have approximately 60 young members aged six and upwards with a waiting list. Our limiting factor is the number of leaders and helpers. With more assistance we could open our doors to more young people. Many of our leaders are, or were, parents of children that joined scouts. Most had no idea they would make good leaders and weren't sure they could fit it in, but somehow, they did and we are very thankful to them. If you think you could help in delivering scouting please email Matt Sarti [dcguildfordeastscouts@gmail.com](mailto:dcguildfordeastscouts@gmail.com).



## DENE PLACE CARE HOME

We are a small, friendly care home, set within a tranquil spot on a 400-acre National Trust estate in West Horsley. Our residents can enjoy the home's own seven acres of beautiful gardens and grounds. We're here to support loved ones with a range of needs, from nursing, residential to short stay care. Talk to us about how we can help. The safety and wellbeing of our residents and team has always been our priority, so we'll keep providing PPE and continue testing. Call for advice on care today - 01483 282733.



**Call for advice on care today...**  
**01483 282733**

## CLUBS & ACTIVITIES AROUND THE VILLAGE

### ARTS

**Horsley & Clandon Society of Arts**  
Robyn Cormack Tel: 01483 224063

**Horsley Craft Group**  
Jody Fern Tel: 01483 284437

**The Arts Society Horsley**  
Ann Simons Tel: 01483 284193  
[www.theartsocietyhorsley.org.uk](http://www.theartsocietyhorsley.org.uk)

**The Arts Society Horsley Lovelace**  
Gill Millership Tel: 01483 282244  
[www.theartsocietyhorsleylovelace.org.uk](http://www.theartsocietyhorsleylovelace.org.uk)

### SPORTS & ACTIVITIES

**Sports facilities & Skatepark**  
Outdoor Exercise Equipment & MUGA  
Kingston Meadow, Kingston Avenue

**East Horsley Bowling Club**  
Marilyn Murphy Tel: 01483 284701  
[www.easthorsleybc.co.uk](http://www.easthorsleybc.co.uk)

**The Horsley Shufflers – running group**  
[www.facebook.com/HorsleyShufflers](http://www.facebook.com/HorsleyShufflers)

**Horsley Football Club, West Horsley**  
Russell Palmer Tel: 01483 283160  
[www.horsleyfc.co.uk](http://www.horsleyfc.co.uk)

**Effingham and Leatherhead RFC**  
Tel: 01372 458887  
<https://eaglesrugby.club>

**West Horsley Community Club Snooker & Pool**  
Robert Elliott Tel: 07702 922217

**Effingham Table Tennis Club**  
Tim Hobbs Tel: 01372 452197

**Horsley Tennis Club**  
[www.horsleysportsclub.com](http://www.horsleysportsclub.com)

**Horsley Badminton Club**  
David Sethi Tel: 01483 282468  
[www.horsleybadminton.co.uk](http://www.horsleybadminton.co.uk)

**Horsley Cricket Club**  
Horsley Sports Club  
[www.horsleysportsclub.com](http://www.horsleysportsclub.com)

**Effingham Cricket Club**  
Email: [info@effinghamcc.co.uk](mailto:info@effinghamcc.co.uk)  
[www.effinghamcc.co.uk](http://www.effinghamcc.co.uk)

**Horsley and Send Cricket Club**  
Fen Palmer-Mole Tel: 07768 404379  
[fenpm@btinternet.com](mailto:fenpm@btinternet.com)  
[www.horsleyandsendcc.co.uk](http://www.horsleyandsendcc.co.uk)

### DRAMATICS & CHORAL

**The Nomad Theatre**  
Tel: 01483 284717  
[www.nomadtheatre.com](http://www.nomadtheatre.com)

**The Whips Players**  
Tel: 01372 457501  
[www.horsleyamdram.org](http://www.horsleyamdram.org)

**Horsley Choral Society**  
Tel: 01372 457987 / 01483 283683  
[www.horsleychoralsociety.com](http://www.horsleychoralsociety.com)

### CLUBS

**University of the Third Age (U3A)**  
David Lush Tel: 01483 280267  
[www.horsleyu3a.org.uk](http://www.horsleyu3a.org.uk)

**East Horsley Women's Institute**  
Helen Taylorson Tel: 01483 283577

**West Horsley Women's Institute**  
Pip Holmes Tel: 01483 285496

**West Surrey Natural History Society**  
Tel: 01372 457623

**The Probus Club of the Horsleys**  
David Lush Tel: 01483 280267

**Rotary Club of Bookham & Horsley**  
Mark Secker Tel: 01372 458733

**Horsley Countryside Preservation**  
Roy Proctor Tel: 01483 282410  
[www.hcps.online](http://www.hcps.online)

**East Horsley Bridge Club**  
Anne Hereward Tel: 01483 571300  
[www.bridgewebs.com/easthorsley](http://www.bridgewebs.com/easthorsley)

**Horsley Floral Decoration Group**  
Ruth Farmer Tel: 01483 202440

**Horsley Garden Society**  
Roger Lindsay Tel: 01483 282408

**Beehive Craft Group**  
Margaret Read Tel: 01483 282038  
[www.easthorsleychurch.org.uk](http://www.easthorsleychurch.org.uk)

**Wheel of Care Social & Exercise Clubs**  
WH Methodist Church: Film & Scrabble Clubs  
WH Village Hall: Seated Dance Class  
The Wheelhouse East Lane: Movement to Music  
Tel: 01483 281703  
[www.westhorsleywheelofcare.co.uk](http://www.westhorsleywheelofcare.co.uk)

### YOUTH

**1st Horsley Beavers, Cubs & Scouts**  
Matt Sarti: [dcguildfordeastscouts@gmail.com](mailto:dcguildfordeastscouts@gmail.com)  
[www.scouts.org.uk](http://www.scouts.org.uk)

**4th Horsley Brownies**  
Elizabeth Robinson Tel: 01483 281341  
[horsleybrownies@yahoo.co.uk](mailto:horsleybrownies@yahoo.co.uk)

**1st West Horsley Brownies**  
Email: [westhorsleybrownies@gmail.com](mailto:westhorsleybrownies@gmail.com)

**1st Horsley Guides**  
Karlene Peach Tel: 01483 224692

**Explorer Scouts**  
Email: [kevin@yeo.me.uk](mailto:kevin@yeo.me.uk)

**If you would like to add your club, email**  
[commsco@easthorsleypc.org](mailto:commsco@easthorsleypc.org)





# West Horsley Parish Council

Concepts registered by West Horsley Parish Council to be considered for funds from SCC's Your Fund Surrey £100million fund for Community projects:

## VOTE FOR YOUR FAVOURITE TODAY AND POTENTIALLY ADD TO YOUR VILLAGE AMENITIES!

### Youth Indoor and Outdoor activity Centre with WHPC office

To create a local contemporary fitness and activity indoor/outdoor environment for over 12's, teenagers and their families. This space would also be the HQ for the West Horsley Youth Council launched in spring of this year.

### Fast charging electric vehicle station

Designed in keeping with the rural look and feel of our village.

### Band Stand Community events

As a linear village this would provide a central safe and secure area for events and gatherings for all generations in the village.

### Village Hall Revamp

Enabling us to modernise and provide outdoor shelter to users of the Village Hall and playground and provide a much-needed outdoor toilet facility for playground users (0-11) when the Village Hall is closed.

### Community Artwork Piece

A Bespoke Sculpture Art installation utilising the community to create part of the installation. A reflection of the year 2020.

For further information please email [cllrbusi@westhorsley.info](mailto:cllrbusi@westhorsley.info) or go to <https://yourfundsurreymap.commonplace.is/comments>

THINK BIG

## WHERE'S WALTER!

Sir Walter Raleigh was beheaded in 1618! Bess, his wife, arranged for his head to be embalmed and kept it by her side until she died at West Horsley Place (WHP), where she lived with her son, Carew, and his family. Following Bess' death, his head was kept under the stairs and in 1660 when tragedy struck and Carew's three young children died in an epidemic, it was buried alongside the children in the side chapel of St Mary's Church, West Horsley!

This bag, rumoured to have held Walter's head, was found in the attic at WHP and knowing that Bess had kept his head in a red velvet bag the Mary Roxburghe Trust (WHP) have sought to find out if it is the actual bag.



## CAN YOU FIND HIS HEAD?



## ANYONE FOR TENNIS

For West Horsley residents, a free tennis court booking system is now live. Visit 'Village Facilities' page on the website [www.westhorsley.info](http://www.westhorsley.info).

We would like to encourage residents to enjoy the facilities that have recently opened after the COVID-19 restrictions. As a temporary gesture we would also like to offer residents and regular Tennis Coaches the facilities free of charge for the rest of 2021 in the hope that this helps our local businesses get off the ground after a tough year. Going forward we will be installing a nominal booking fee for all Tennis Coaches/private lessons in 2022.



## WHPC GRANTS

Every year, the Parish Council gives grants to organisations who provide services within West Horsley. If your organisation would like to be considered, please contact the Clerk for an application form [clerk@westhorsley.info](mailto:clerk@westhorsley.info). Submissions to be sent back by the end of May 2021 for 2021/2022 grants.

## WHPC MEETINGS

Normally the Parish Council holds its meetings once a month (usually on the third Tuesday) at 7.30pm in the Cedar Room at the Village Hall. The public are welcome at all meetings. Please contact our Clerk who will issue details on how to attend whilst social distancing is in place. See individual agendas for further information and changes to arrangements at [www.westhorsley.info](http://www.westhorsley.info).



**JOANNA CADNAM**  
The Parish Clerk (Locum)  
[clerk@westhorsley.info](mailto:clerk@westhorsley.info)



## SAVE THE DATE IN 2022

## "TEA & TALENT" DAY OUT

## 10 SEPTEMBER AT WEST HORSLEY PLACE

WHPC has decided to reschedule the 2021 Village Event until next year.

### Please 'Save the Date' of 10 September 2022

It is going to be a spectacular day out for family and friends! We will keep reminding you! You won't want to miss it!

## USEFUL TELEPHONE NUMBERS & WEBSITES

### Neighbourhood Policing team

Tel: 101  
[guildford@surrey.police.uk](mailto:guildford@surrey.police.uk)

### GBC Refuse Collection

Tel: 01483 505050  
[www.guildford.gov.uk](http://www.guildford.gov.uk)

### Slyfield Recycling Centre

Tel: 01483 532187

### Report suspicious activity

Tel: 0800 789 321  
[www.met.police.uk](http://www.met.police.uk)

### Water Leaks

Tel: 0345 357 2407  
[www.affinitywater.co.uk](http://www.affinitywater.co.uk)

### Gas Leaks

Tel: 0800 11 19 99

### Electricity Power Cuts

Tel: 0800 31 63 105 or 105 (Mobile)  
[www.ukpowernetworks.co.uk](http://www.ukpowernetworks.co.uk)

### Flooding & Waterways

Tel: 0345 988 1188  
[www.gov.uk/report-flood-cause](http://www.gov.uk/report-flood-cause)

### Environment incident hotline

Tel: 0800 80 70 60

### Surrey County Council

[www.surreycc.gov.uk/do-it-online/](http://www.surreycc.gov.uk/do-it-online/)

### SCC Highways Roads & Transport

[www.surreycc.gov.uk/roads-and-transport](http://www.surreycc.gov.uk/roads-and-transport)

### Report Fly-tipping

[www.guildford.gov.uk/flytipping](http://www.guildford.gov.uk/flytipping)

### Tree Preservation Orders

[www.guildford.gov.uk/protectedtrees](http://www.guildford.gov.uk/protectedtrees)  
GBC Customer Services: 01483 505050

## PARISH COUNCIL CONTACTS



**ELAINE BEST**  
Chairman  
[chairman@westhorsley.info](mailto:chairman@westhorsley.info)



**FRANCES KING**  
[cllrking@westhorsley.info](mailto:cllrking@westhorsley.info)



**TONY ROGERS**  
[cllrrogers@westhorsley.info](mailto:cllrrogers@westhorsley.info)



**MEL BEYNON**  
[cllrbeynon@westhorsley.info](mailto:cllrbeynon@westhorsley.info)



**VANESSA BUOSI**  
[cllrbusi@westhorsley.info](mailto:cllrbusi@westhorsley.info)



**GUY MURRAY**  
[cllrmurray@westhorsley.info](mailto:cllrmurray@westhorsley.info)



**CATHERINE YOUNG**  
[cllryoung@westhorsley.info](mailto:cllryoung@westhorsley.info)



**SALLY NEWMAN**  
[cllrnewman@westhorsley.info](mailto:cllrnewman@westhorsley.info)



**ANGUS GRAHAM**  
[cllrgraham@westhorsley.info](mailto:cllrgraham@westhorsley.info)